



# Motion - Mouvement

Aluminium case AC capacitor - *Condensateur AC, boîtier aluminium*

**Self-healing - Non inductive**

*Auto-cicatrisant - Non inductif*

**Start-up & phase shift**

**Compensation of inductive loads**

*Démarrage et déphasage moteur*

*Compensation des charges inductives*



**Dielectric - Diélectrique**

Metallized polypropylene MKP - *Polypropylène métallisé MKP*

**Housing - Boîtier**

Cylindrical case, self extinguishing plastic in PC-ABS UL 94 V0  
*Cylindrique en plastique auto-extinguible PC-ABS-UL 94 V0*

**Sealing - Obturation**

Polyurethane resin - *Résine polyuréthane*

**Tolerance - Tolérance**

± 2, ± 5, ± 10% Asymetrical upon request - *Asymétrique sur demande*

**Operating temperature - Température d'utilisation**

-40° to +85°C - *-40°C à +85°C*

**Test voltage between terminals**

*Tension d'essai entre bornes*

2 x U<sub>n</sub> (10 seconds) - *2 x U<sub>n</sub> (10 secondes)*

**Fixing of the case - Fixation du boîtier**



Bottom threaded stud  
*Fixation par vis de fond*

**Test voltage between terminals**

*Tension d'essai entre bornes*

2 x U<sub>n</sub> (10 seconds) - *2 x U<sub>n</sub> (10 secondes)*

**Rated voltage U<sub>n</sub> - Tension nominale U<sub>n</sub>**

From AC 250V up to AC 600V - *De 250V à 600V AC*

**Rated frequency - Fréquence nominale**

50-60 Hz

**Maximum operating voltage & current**

*Tension et courant de service max*

U<sub>max</sub>: 1.1xU<sub>n</sub>, I<sub>max</sub>: 1.3xI<sub>n</sub>

**Temperature coefficient - Coefficient de température**

-300 to -150 ppm / °C - *-300 à -150 ppm / °C*

**Standard - Normes**

IEC 252-EN 60252 VDE 560-8 - *CEI 252-EN 60252 VDE 560-8*

**Life expectancy - Durée de vie**

T<sub>min</sub>: -25°C, T<sub>max</sub>: +55°C, +70°C, +85°C

Damp heat days: - *Nbre jours de l'essai à chaleur humide*

21

Class of safety - *Classe de sécurité*

PO

Code article Part number	250 V AC 350 V DC	400 V AC 560 V DC	550 V AC 800 V DC
PC	10 000 h		
PE	30 000 h	10 000 h	1 000 h*
PMF		30 000 h	3 000 h

\*T<sub>max</sub>: 70°C

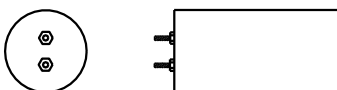


# Motion - Mouvement

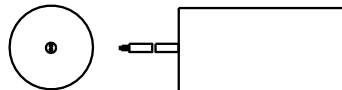
## Aluminium case AC capacitor - Condensateur AC, boîtier aluminium

Part number Code article	Capacitance Capacité	Ø (mm)	L (mm)	I <sub>peak</sub> I <sub>crête</sub>	I <sub>rms</sub> I <sub>eff</sub>	ESR (mΩ)
PC100AL	1	15	36	35	0.7	27
PC150AL	1.5	21	49	35	0.7	19
PC200AL	2	21	49	35	0.7	15
PC250AL	2.5	21	49	35	0.7	12.5
PC300AL	3	21	49	35	0.7	10.5
PC400AL	4	21	49	70	1	8
PC500AL	5	25	49	70	1	6.5
PC600AL	6	30	49	70	1.2	6
PC800AL	8	30	49	80	1.5	4.6
PC1000AL	10	30	49	80	1.5	3.9
PC1200AL	12	35	49	90	1.6	3.6
PC1600AL	16	35	66	120	2.4	3
PC2000AL	20	35	66	150	2.7	2.6
PC2500AL	25	40	68	180	3.5	2.3
PC3000AL	30	40	68	180	3.5	2.1
PC3500AL	35	45	66	290	5.3	2
PC4000AL	40	45	86	300	6	1.9
PC5000AL	50	45	86	350	6.5	1.7
PC6000AL	60	50	86	370	7.5	1.6
PC8000AL	80	50	116	370	7.5	1.6
PC10000AL	100	55	116	500	10	1.5
PC15000AL	150	60	116	650	14	1.35
PC20000AL	200	72	116	1100	22	1.3
PE100AL	1	21	49	150	1.1	29
PE150AL	1.5	21	49	180	1.6	20
PE200AL	2	25	49	200	2.2	15
PE250AL	2.5	25	49	230	2.8	12.5
PE300AL	3	30	49	245	2.9	11
PE400AL	4	30	49	265	3.1	9.5
PE500AL	5	30	49	300	3.5	7
PE600AL	6	35	49	320	3.5	5.9
PE800AL	8	35	66	320	3.5	4.8
PE1000AL	10	35	66	320	3.5	4.2
PE1200AL	12	35	66	320	3.5	3.8
PE1600AL	16	40	68	400	4.5	3.2
PE2000AL	20	45	68	420	5	2.8
PE2500AL	25	45	86	450	5	2.5
PE3000AL	30	45	86	450	6	2.2
PE3500AL	35	50	86	450	6	2
PE4000AL	40	45	116	520	7.5	2
PE5000AL	50	50	116	700	11	1.8
PE6000AL	60	55	116	700	11	1.7
PE8000AL	80	60	116	850	13	1.5
PE10000AL	100	65	116	1200	17	1.4
PMF050AL	0.5	21	49	35	0.7	50
PMF100AL	1	30	49	35	0.7	26
PMF150AL	1.5	35	49	35	0.7	18
PMF200AL	2	35	49	55	1	14
PMF250AL	2.5	30	66	55	1	11.2
PMF500AL	5	40	68	80	1.5	6.6
PMF600AL	6	40	68	120	2.5	5.6
PMF800AL	8	45	66	120	2.5	4.5
PMF1000AL	10	45	88	180	3.5	3.8
PMF1500AL	15	50	86	190	3.7	3.8
PMF2000AL	20	55	86	280	5.5	2.5
PMF2500AL	25	55	86	360	7	2.2
PMF3000AL	30	60	116	360	7.5	2.1
PMF3500AL	35	60	116	550	12	1.9
PMF4000AL	40	65	116	600	14	1.8

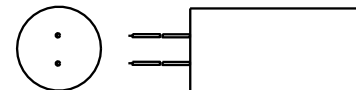
### Terminals - Sorties



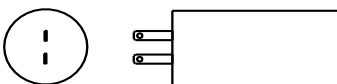
A - Screw terminals - *Tiges filetées*



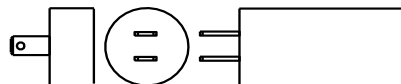
B - Double insulated wires  
*Fils double gaine*



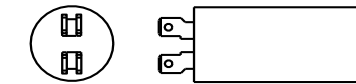
C - Insulated wires - *Fils gainés*



D - 2.8 Singles tags - *Cosses simples 2.8*



E - 6.35 Singles tags  
*Cosses simples 6.35*



F - 6.35 double tags  
*Cosses doubles 6.35*