

**Segmented metallized polypropylene film capacitors**  
**Self-healing - Non inductive**

*Condensateurs polypropylène métallisé segmenté*  
*Auto-cicatrisants - Non inductifs*



**Dielectric - Diélectrique**

Metalized polypropylene, segmented - *polypropylène métallisé segmenté*

**Housing - Boîtier**

Cylindrical shape, self-extinguishing plastic case  
*Cylindrique en plastique auto-extinguible*

**Terminals - Sorties**

Screw, tags, wire - *Vis, cosses, fils souples ou rigides*

**Tolerance - Tolérance**

± 2 %, ± 5 %, ± 10 % asymmetrical tolerance upon request  
*Tolérances asymétriques sur demande*

**Rated voltage  $U_n$  - Tension nominale  $U_n$**

AC 400 V

**Rated frequency - Fréquence nominale**

50 - 60 Hz

**Maximum operating voltage and current**

*Tension et courant de service maximum*

$U_{max} : 1.1 \times U_n$

$I_{max} : 1.3 \times I_n$

**Test voltage between terminals**

*Tension d'essai entre bornes*

$2 \times U_n$  (10 seconds)

**Discharge resistor - Résistance de décharge**

Included upon request - *incorporée sur demande*

**Temperature Coefficient - Coefficient de température**

-300 to -150 ppm / °C - *-300 à -150 ppm / °C*

**Climatic category - Catégorie climatique**

$T_{min} / T_{max} / 21$

$T_{min} : -25 \text{ °C}, T_{max} : +85 \text{ °C}$

**Damp heat test - Essai à la chaleur humide**

21 days @ 40°C / 93% rh according to 60068-2-78

*21 jours à 40°C et 93% hr selon 60068-2-78*

**Class of safety - Classe de sécurité**

S3

**Life expectancy in hours - Durée de vie en heures**

Class B, 10 000 h

**Standard - Norme**

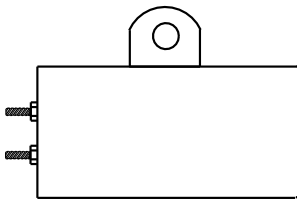
Certified by VDE according to - *homologation VDE selon la norme:*

EN 60252-1 :2011/A1 :2013 - IEC 60252-1 :2010/

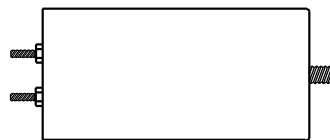
AMD1 :2013

Part number Code article	Capacitance Capacité (nF)	$I_{\text{eff}}$ $I_{\text{rms}}$ (A)	$I_{\text{peak}}$ $I_{\text{crête}}$ (A)	$\varnothing$ (mm)	L (mm)	ESR (m $\Omega$ )	Weight (g)
PSE500PL	5	3.5	240	35	49	7.5	65
PSE600PL	6	3.5	260	35	49	6.5	65
PSE700PL	7	3.2	240	30	69	5.9	68
PSE800PL	8	3.5	260	30	69	5.3	68
PSE900PL	9	3.2	240	35	69	5.2	90
PSE1000PL	10	3.5	260	35	69	4.8	90
PSE1100PL	11	3.5	260	35	69	4.4	90
PSE1200PL	12	3.5	260	35	69	4.2	90
PSE1300PL	13	3.8	300	40	69	4.2	115
PSE1400PL	14	4.2	300	40	69	4	115
PSE1500PL	15	4.5	320	45	69	3.9	145
PSE1600PL	16	4.5	320	45	69	3.7	145
PSE1700PL	17	4.5	320	45	69	3.5	145
PSE1800PL	18	4.8	330	50	68	3.5	175
PSE1900PL	19	5	340	50	68	3.3	175
PSE2000PL	20	5	340	50	68	3.3	175

**Fixing of the case - Fixation du boîtier**

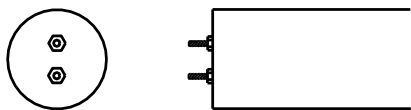


1- Fixation par patte latérale - lateral bracket

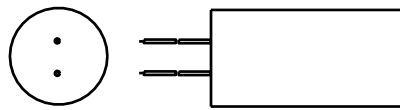


2- Fixation par vis de fond - bottom threaded stud

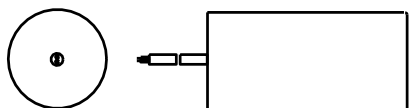
**Sorties - Terminals**



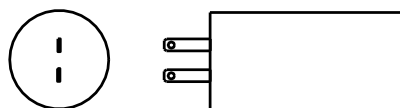
A- Tiges filetées - screw terminals



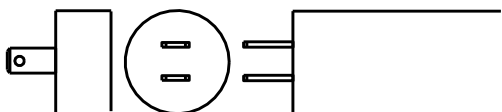
B- Fils gainés - Insulated wires



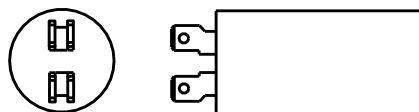
C- Fils double gaine - double insulated wires



D- Cosses simples 2.8 - 2.8 single tags



E- Cosses simples 6.35 - 6.35 single tags



F- Cosses doubles 6.35 - 6.35 double tags